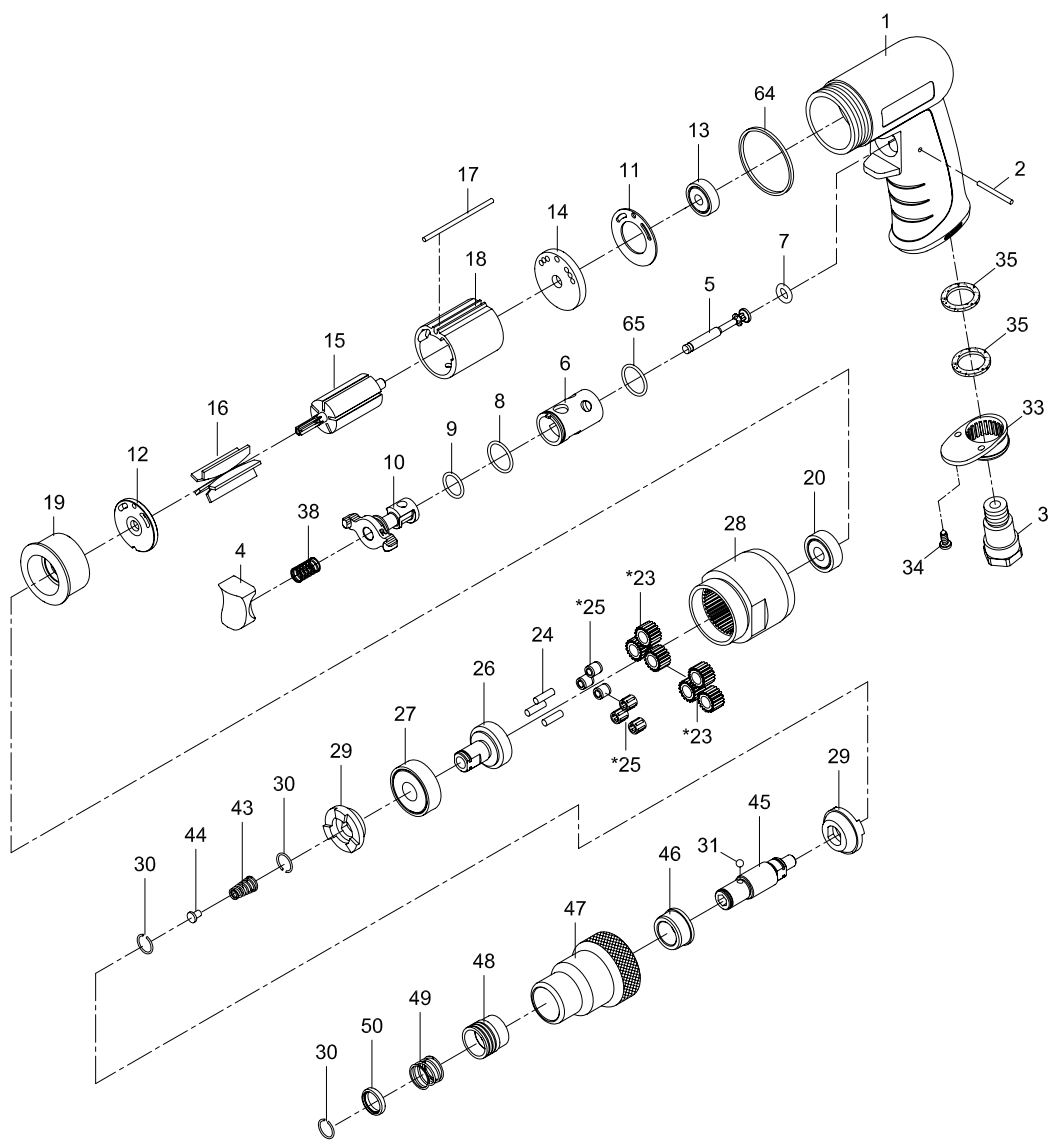


1/4" AIR SCREWDRIVER-POSITIVE CLUTCH



| Index No. | Parts No. | Description | Index No. | Parts No. | Description |
|-----------|------------|----------------------|-----------|-----------|----------------------------|
| 1 | 75-7254P01 | Motor Housing | *25 | 80225 | Bushing (3) |
| 2 | 822202 | Pin (2.5x26.8) | 26 | 80426 | Needle Bearing (3) (4x7x8) |
| 3 | 75-725303 | Air Inlet | 27 | 080227 | Work Spindle |
| 4 | 75-725304 | Trigger | 28 | 80428 | Ball Bearing (6201z) |
| 5 | 75-725305 | Valve Stem | 29 | 80429 | Clamp Nut |
| 6 | 75-725306 | Valve Bushing | 30 | 80429 | Drive Dog (2) |
| 7 | 72807-12 | O-Ring (4.5x2.5) | 31 | 80230 | Retaining Ring (3) |
| 8 | 795820 | O-Ring (15.5x1.5) | 31 | 40145 | Steel Ball (1/8") |
| 9 | 80209 | O-Ring (12x1.6) | 33 | 70110-21 | Exhaust Diffuser |
| 10 | 75-725310 | Reverse Lever | 34 | 40309 | Screw (2) (TS2.9) |
| 11 | 80211 | Motor Gasket | 35 | 75-725350 | Damping Material (2) |
| 12 | 80414 | End Plate | 38 | 82208 | Valve Spring |
| 13 | 030113 | Ball Bearing (626zz) | 43 | 80220 | Spring |
| 14 | 75-725314 | Rear End Plate | 44 | 80221 | Spring Guide |
| 15 | 80415 | Rotor | 45 | 80432 | Cam Spindle |
| 16 | 80216 | Rotor Blade (5) | 46 | 80435 | Bushing |
| 17 | 75-725317 | Pin (2.5x57) | 47 | 80436 | Clutch Housing |
| 18 | 80218-22 | Cylinder | 48 | 80242 | Ball Retainer |
| 19 | 84-725119 | Front End Plate | 49 | 80243 | Spring |
| 20 | 030120 | Ball Bearing (608zz) | 50 | 80244 | Washer |
| *23 | 80223-11 | Planet Gear (3) | 64 | 75-725351 | Decoration Ring |
| | 80223-14 | Planet Gear (3) | 65 | 72009 | O-Ring (15.7x1.7) |
| 24 | 30124 | Pin (3) (4x13.8) | | | |

* Optional Parts

84-7254P-0001